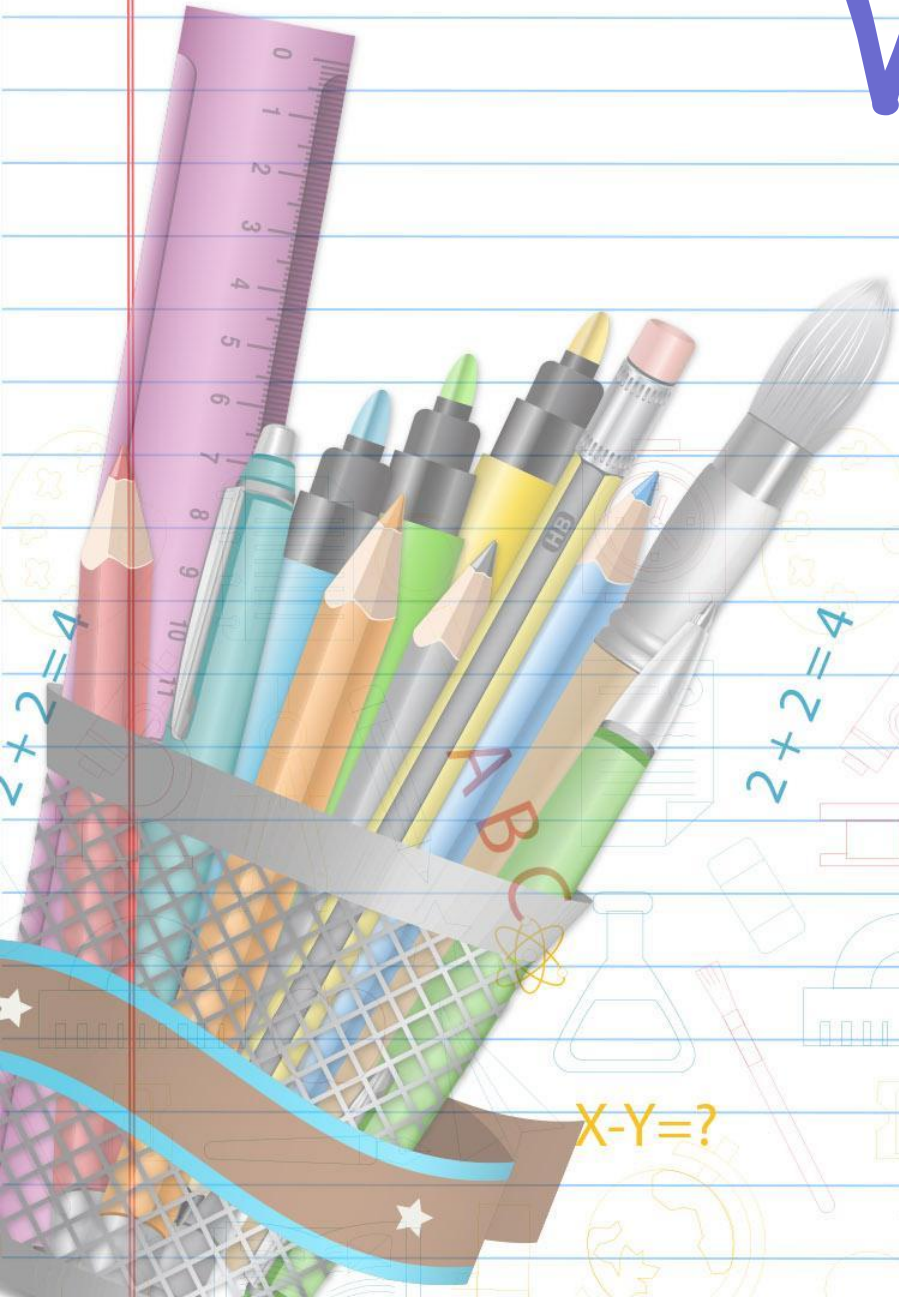


# Welcome to Year 6



$2+2=4$


$2+2=4$

$2+2=4$

$X-Y=?$

$X-Y=?$

ABC

A decorative graphic at the top of the page features a teal wave-like shape. Inside and around the wave are various school supplies including pens, pencils, and a ruler. The background also shows faint outlines of a globe and a building.

# Our Team

- Miss Garoghan
- Mrs McHutchison
- 28 Children

# Our Timetable

## Year 6 Autumn timetable

	8.35 - 9.05	9:05-9:25	9:25 - 9:40	9:40 - 10:30	10.30 - 10:45	10.45 - 11.15	11:05 - 12:00	12:00 - 1:00	1:00 - 2:00	2:10 - 3:10	3:10 - 3:20
Monday	Welcome Next steps Spelling Shed <b>Spelling 1</b>	<b>Assembly (HT)</b>	Daily Maths Fluency	Maths	Break & tuck	Spellings	Writing	Lunch	Art/D&T	French RSHE	Whole Class Book
Tuesday	Welcome Next steps LBQ <b>Spelling 2</b>	<b>Assembly (VfS)</b>	Swimming			Maths	Handwriting Writing		Music		
Wednesday	Welcome Next steps TTRS <b>Spelling 1</b>	<b>Assembly (VfS class)</b>	Fast Ten	Maths		Whole Class Reading	Writing		<b>CG PPA</b> PE	<b>CG PPA</b> Outdoor Learning	
Thursday	Welcome Next steps LBQ <b>Spelling 2</b>	<b>Assembly (singing)</b>	Daily Maths Fluency	Maths		Whole Class Reading	Writing		Geography/ History	RE	
Friday	Welcome Parents in for reading <b>Spelling All</b>	<b>Assembly (MME)</b>	Fast Ten	Maths		Whole Class Reading	Writing		Science	Computing	

- Daily handwriting/spelling/times table morning groups   - Daily morning readers   - 10 minute blast 2pm



# Autumn Curriculum

- Science - Evolution and Inheritance
- Computing - Online Safety, Using Google and Coding
- PE - Swimming and Basketball
- RSHE - Being me and Celebrating differences
- French - At School.
- History - The Maya
- Geography - The Amazon
- Art - Photography
- D&T - Making a waistcoat
- Music - traditional Scottish folk
- RE - Islam and Christianity
- Regular assessments



# Pathway Curriculum

- Encourages understanding of the learning journey they are experiencing by following a pathway from Nursery to Year 6.
- Lays 'Footprints' in their memories through the undertaking of special experiences. They keep these memories in a 'Pathway Pad'.
- All children are to have the same experiences (regardless of their prior or current experiences) whilst ensuring that we offer a highly personalised curriculum.

# Pathway Curriculum

**Year 6**

★ Plan a journey Date:

★ Use public transport safely Date:

★ Listen to an orchestra Date:

★ Swim 25m Date:

★ Visit a court house Date:

★ Spend a week away from family Date:

*A Pathway to Grow, be Curious and Discover...*

A decorative graphic at the top of the page features a teal wave-like shape on the left side. To the right, a collection of school supplies is visible, including several colored pencils (yellow, green, blue, orange), a grey pencil sharpener, a blue pencil, a yellow pencil, a green pencil, a blue pencil, a pink ruler, and a blue pencil. The background is white with faint, light blue grid lines.

# Reading

- Reading comes first!
- School and WGC library visits
- Little Wandle Letters and Sounds revised
- Daily reading sessions
- Individual readers - at least three times a week
- Books are changed regularly from both class and school library.
- All children heard read through a variety of different ways throughout the day everyday.
- Join us every Friday morning to read with your child in the classroom (8:35-8:50am)

A decorative graphic at the top of the slide features a teal wave-like shape. Inside the wave, there is a collection of school supplies including pens, pencils, and a ruler. The background of the slide is white with faint, light blue grid lines.

# Spelling

- Spelling Shed scheme of work
- Common misconception words
- Focus spellings before writing sessions.

A decorative graphic at the top of the page features a teal wave-like shape. Inside the wave, there is a collection of school supplies including various colored pens, pencils, and a ruler. The background of the graphic is light blue with faint, stylized icons of a school building and a globe.

# Handwriting

- First two weeks everyday
- A taught session once a week
- Addressed in any writing across the curriculum in books.

A decorative graphic at the top of the page features a teal wave-like shape. Inside and around the wave are various school supplies including pens, pencils, and a ruler. The word 'Maths' is written in a large, blue, sans-serif font over the wave.

# Maths

- Essential Maths
- Daily Fluency / Fast ten
- Diagnostic assessment at the end of each term
- Weekly times tables practise
- Regular TTRS

A decorative graphic at the top of the slide features a teal wave-like shape. Behind the wave, there is a collection of school supplies including pens, pencils, and a ruler. The word "Conferencing" is written in a dark blue, rounded font across the wave.

# Conferencing

- 1:1 conversations about ongoing targets.
- Individualised next steps
- Encouraged to know and create own targets and next steps to push learning forward.
- Mostly led by Ms Allen.

A decorative graphic at the top of the page features a teal wave shape. Inside the wave, there is a collection of school supplies including pens, pencils, and a ruler. The background of the wave is light blue with faint grid lines.

# PE

- Twice a week hourly sessions
- Our PE days are Tuesdays and Wednesdays
- Children can come to school dressed in their PE kit on those days
- We have invested in play. Premier are outside at lunchtimes on KS2 leading and supporting structured play
- Sports leaders are outside at break and lunchtimes leading and supporting structured play

A decorative graphic at the top of the slide features a teal wave-like shape. Behind the wave, there is a collection of school supplies including pens, pencils, and a ruler. The background also has faint, light-colored icons of a school building and a globe.

# Outdoor Learning

- One formal session a week with Mrs Tollervey (formally known as Mrs Pumilia)
- Other outdoor sessions throughout the year
- Please bring wellies/outdoor shoes on Wednesday

A decorative graphic at the top of the slide features a teal wave-like shape. Behind it, various school supplies are visible, including a grey marker, a yellow pencil, a green pencil, a blue pencil, a blue marker, a pink ruler, and a red pencil. The background also shows faint outlines of a school building and a globe.

# Votes for Schools

- Weekly launch assembly
- Learn about the world around them; locally, nationally and internationally fits in with the Pathway curriculum.
- Discuss topics that affect them
- Express their views and justify them
- Home bulletin shared on the website weekly so you can continue the conversation

The background features a teal wave graphic that curves across the top of the page. Behind the wave, there is a collection of school supplies including various colored pens, pencils, and a ruler. The overall theme is educational and modern.

# Home Learning

- Regular home learning will be set through Google Classroom on a Monday
- English, Maths and one foundation subject
- Independent work where possible
- Recap or consolidation of learning
  - Great preparation for secondary school in creating a routine/timetable and preparing

A decorative header featuring a teal wave graphic on the left and a collection of school supplies (pens, pencils, and a ruler) on the right. The word "Tuck" is written in a large, dark blue, sans-serif font in the center.

# Tuck

- Everyday at break time for key stage 2
- No more than 50p a day
- Please do not send in large amounts of money

# Celebrating Me Cards

YEAR 6

## CELEBRATING ME



TARGET	AUTUMN	SPRING	SUMMER
<b>ME</b>			
I am a positive role model to all and lead by example			
I grab opportunities that come my way			
I push myself beyond my comfort zone			
I am proactive in achieving my goals			
<b>MY FRIENDS</b>			
I understand that we are all different			
I demonstrate respect and empathy			
I recognise the importance of every member of the team			
I interact positively with all			
<b>MY LEARNING</b>			
I know how to manage my weaknesses			
I challenge myself and build on what I know			
I share my knowledge and can collaborate with my peers			
I can identify next steps and areas for improvement			

A decorative graphic at the top of the slide features a teal wave shape. Behind the wave, there is a collection of school supplies including pens, pencils, and a ruler. The word "Rewards" is written in a large, dark blue, sans-serif font across the middle of the wave.

# Rewards

- Regular personalised feedback & praise
- Marble jar
- Marvellous Me assembly (Friday)
- Star of the week
- Got caught reading
- Sporting achievements
- Celebrating Me cards

The header features a teal wave graphic that curves across the top of the slide. Behind the wave, there is a collection of school supplies including various colored pens, pencils, and a ruler. The title 'Parent Partnership' is written in a dark blue, sans-serif font, positioned above the wave.

# Parent Partnership

- Important to us
- Regular communication
- Door at drop off and pick up
- Marvellous Me updates
- School newsletter every other week
- Class newsletter
- Class webpage

A decorative graphic at the top of the slide features a teal wave shape. Behind the wave, there is a collection of school supplies including pens, pencils, and a ruler. The word 'Reminders' is written in a large, blue, rounded font on the left side of the wave.

# Reminders

- Named uniform (especially jumpers!)
- Named water bottle
- Sign up to Marvellous Me - 'be in the know!'
- Year 6 web page: <https://www.homerswood.herts.sch.uk/year-6-15/>
- E-mail: [year6@homerswood.herts.sch.uk](mailto:year6@homerswood.herts.sch.uk)
- Open evenings for secondary schools are over the next couple of weeks
- Deadlines for secondary applications: October 31st

A decorative graphic at the top of the slide features a teal wave-like shape. Inside and around the wave are various school supplies, including pens, pencils, and a ruler. The background is white with faint horizontal lines.

Before moving on...

Any questions?

A decorative graphic at the top of the page features a teal wave shape that curves across the top. Behind the wave, there is a collection of school supplies including various colored pens, pencils, and a ruler. The background also has faint, light-colored icons of a school building and a globe.

# Residential

Monday 25th September to Friday 29th September 2023

## LAND & WAVE HISTORY

We love getting people outdoors; working really hard to make adventure accessible for everyone.

We've been delivering world class adventures to schools for nearly ten years now and we're really excited that your child will be spending time with us.

During the 2018 season, we worked with 74 different schools from across the UK and worked with over 4,200 kids, delivering epic adventures.

We promise we'll look after them like they're our own. With us, they'll be making new friends, learning new skills, developing their confidence and character everyday.

They'll return full of such great stories; you'll wish you could have come too.

We are Land & Wave and this is going to be the very best school trip.

# Residential

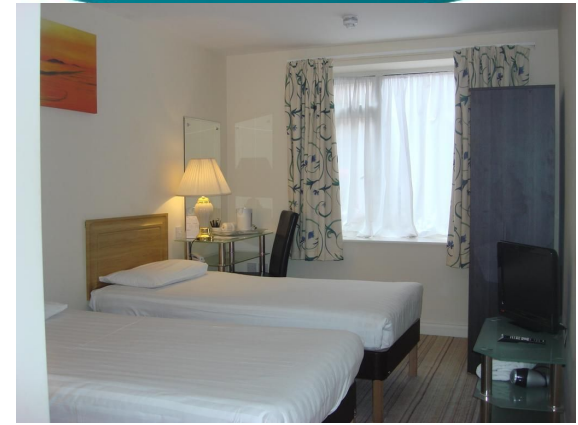
Monday 25th September to Friday 29th September 2023



The hotel is in the immediate vicinity of the center of Bournemouth. You can reach the sandy beaches, Bournemouth Pier and the surf reef in under 15 minutes through Boscombe Gardens.

# Residential

Monday 25th September to Friday 29th September 2023



## The team

Miss Garoghan, Miss Williams and Ms Watts

A decorative graphic at the top of the page features a teal wave-like shape. Behind it, various school supplies are visible, including pens, pencils, and a ruler. The word 'Residential' is written in a large, dark blue, sans-serif font across the top left.

# Residential

Monday 25th September to Friday 29th September 2023

## Our Itinerary:

### Monday 25th

- depart Homerswood
- pit stop en route
- arrive in Bournemouth - bags to rooms
- team building
- mini olympics
- time to explore and settle in

### Tuesday 26th

- coasteering and navigating
- swimming pool



# Residential

Monday 25th September to Friday 29th September 2023

## Our Itinerary:

### Wednesday 27th

- jumbo paddle boarding
- kayaking
- sports

### Thursday 28th

- Bush craft
- Film night

### Friday 29th

- archery tag
- depart  
Bournemouth
- pit stop en route
- Arrive at  
Homerswood

A decorative graphic at the top of the page features a teal wave-like shape. Behind it, there is a collection of school supplies including pens, pencils, and a ruler. The background also has faint, light-colored icons of a school building and a globe.

# Residential

Monday 25th September to Friday 29th September 2023

Family portal - for registering permissions, dietary requirements and medical details etc.

# KIT LIST

- |   |                          |                                   |
|---|--------------------------|-----------------------------------|
| TOWEL FOR SHOWERING                     | <input type="checkbox"/> | Make sure it's easily identified  |
| TOWEL FOR WET ACTIVITIES                | <input type="checkbox"/> | Small to medium size is perfect   |
| PYJAMAS                                 | <input type="checkbox"/> | The rooms are quite warm at night |
| UNDERWEAR & SOCKS                       | <input type="checkbox"/> | Enough to last the week           |
| SWIMWEAR                                | <input type="checkbox"/> | Trunks or an all-in-one costume   |
| WARM JUMPER/FLEECE                      | <input type="checkbox"/> | Just one is plenty                |
| T-SHIRTS                                | <input type="checkbox"/> | Enough to last the week           |
| LIGHT LOOSE FITTING TROUSERS            | <input type="checkbox"/> | Tracksuit trousers are perfect    |
| OLD TRAINERS FOR THE WATER              | <input type="checkbox"/> | Not Crocs or wetsuit boots        |
| TRAINERS FOR DRY ACTIVITIES             | <input type="checkbox"/> | They're going to get muddy        |
| WATERPROOF TROUSERS / JACKET            | <input type="checkbox"/> | Likely to get dirty               |
| WARM JACKET                             | <input type="checkbox"/> | Make sure it's easily identified  |
| A HAT                                   | <input type="checkbox"/> | Sunhat or a woolly hat            |
| TOILETRIES                              | <input type="checkbox"/> | Shampoo, soap, toothpaste etc.    |
| SUNSCREEN                               | <input type="checkbox"/> | Rock the SPF-50                   |
| PERSONAL MEDICATION                     | <input type="checkbox"/> | Inhaler etc.                      |
| REFILLABLE DRINKS BOTTLE                | <input type="checkbox"/> | Make sure it's easily identified  |
| RUCKSACK FOR DAILY USE                  | <input type="checkbox"/> | Double shoulder strap             |
| ONE COMPLETE SET OF CLOTHES TO KEEP DRY | <input type="checkbox"/> | Additional shirt, trousers etc.   |

Spending money  
Not necessary!

DON'T FORGET their  
letters from home!

Any sweets **MUST** be  
individually wrapped  
ready to go into a class  
bag to share out to all.  
NOT IN OWN BAGS.

A decorative graphic at the top of the page features a teal wave shape. Behind the wave, there is a collection of school supplies including pens, pencils, and a ruler. The background also has faint outlines of a school building and a globe.

# Residential

Monday 25th September to Friday 29th September 2022

<https://landandwave.co.uk/watch-this-school-trips-in-dorset/>

# Residential



A decorative graphic at the top of the slide features a teal wave-like shape. Inside the wave, there is a collection of school supplies including pens, pencils, and a ruler. The background of the slide is white with faint horizontal lines.

Thank you for coming

Any questions?